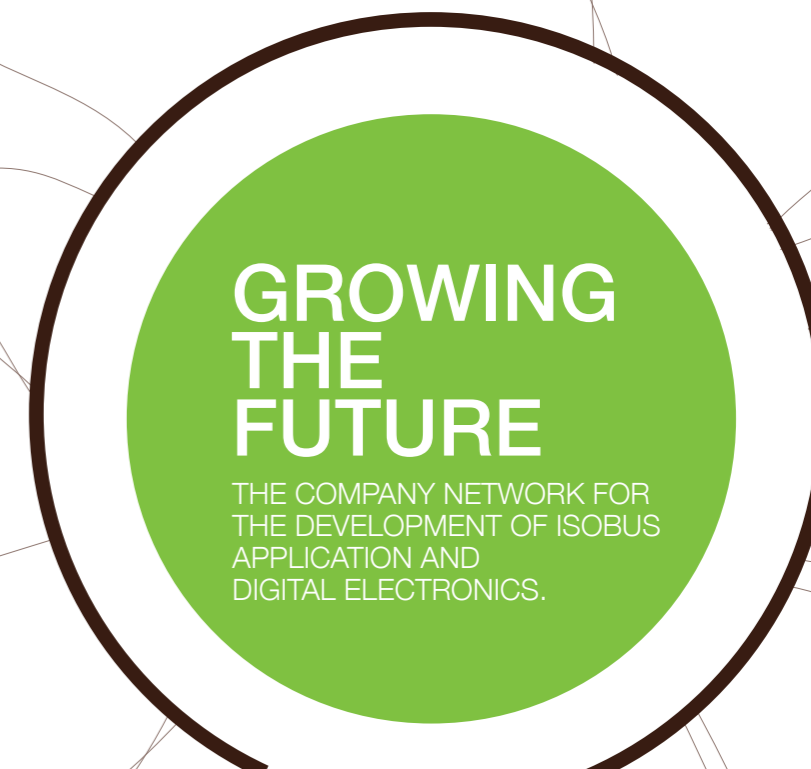


IDE_Agri is a company network set up to develop common activities within the frame of ISOBUS standard and, more generally, of Digital Electronics for agricultural machinery.

Eight founder companies with the execution of Reggio Emilia Innovazione (REI), have joined their specific skills with the following aims

- to take part in the technical activities of AEF (Agricultural Electronic Foundation) in order to share technical decisions in the development of ISOBUS and electronics connected to agricultural applications
- to identify topics of common interest and create synergy during preliminary researches
- to promote the spread of ISOBUS technology and digital electronics
- to share professional knowledge and support companies from the first research to the final certification
- to explore the possibilities of combining already developed products in order to throw on the market turnkey solutions

Successful
Company Network
Synergic
Territory
Innovation
Supply Chain
Common Language
Challenge



Founder companies



www.reinnova.it
Ing. Michela Audone
t. +39 0522 922 238
audone@reinnova.it

www.ideagri.net



AMA is the first group in Italy able to supply components and equipment for outfitting and maintaining offhighway vehicles, agricultural and gardening machinery.

www.ama.it

“Getting in a **company network** in your own branch is not only possible but also stimulating”



ARAG is world leader in production of components for Spraying and Precision Agriculture.

www.aragnet.com

“The members of IDE_Agri are **synergic**, even though sometimes competitors. Understanding this, would be a big step into the world market”



comer industries

COMER INDUSTRIES is a global leader in the design and production of advanced engineering systems and mechatronic solutions for power transmission.

www.comerindustries.com

“We put together our engineering skills, our technologies, our energy, to build networks, to be **successful**”



COBO designs, manufactures and distributes its own control devices, lighting and mechanical systems, electrical and electronic arrangements to the largeser tractor and equipment manufacturers worldwide.

www.cobospa.it

“*Live from the fields* to combine and integrate experience, tradition, **innovation** and a great reliability.”

IDEAagri

GROWING THE FUTURE



ARGO TRACTORS mission is to design, manufacture and deliver tractors having the trade-marks Landini, McCormick e Valpadana.

www.argotracors.com

“The power of the **territory** of Reggio Emilia, the passion, the collective level of skills, the talent to adapt to evolving situations: these are the added values of IDE_Agri”



RE: Lab designs and develops electronic-digital interfaces for human-machine interaction. RE: Lab is leader in the integration and development of components based on the ISOBUS standard.

www.re-lab.eu
www.isobus.it/en

“Today’s **challenge** is to create totally innovative machines, to simplify the work of people, preserving the natural resources and the environment”

“IDE_Agri involves protagonists in the agricultural market, working together in this process of integration of a product and of its **supply chain**”



A leading global manufacturer of hydraulic valves and complete mechatronic systems for mobile equipment.

www.walvoil.com



The company is specialized in the design and manufacturing of hydraulic components for agricultural applications.

www.salvarani.it

“Sharing the **common language of the ISOBUS protocol** allows our products to communicate with those from other companies”